

SOT23  
Breakout

SOIC14 Footprint  
For 74HC125  
Buffer

BitBang  
@2012

Proto-Plate R1.1  
BitBang, co.uk  
Copyright © 2012

BCM2835 GPIO Breakout

SPI CE 1	SPI CE 0
GPIO 25	SPI CLK
GPIO 24	SPI MISO
GPIO 23	SPI MOSI
GPIO 22	UART RX
GPIO 21	UART TX
GPIO 18	I2C SCL
GPIO 17	I2C SDA
CLK0	GND
5V	3V3

BCM2835 GPIOs

I2C UART SPI

Power Pads

PWR

GND

RPI GND

63mm

Power Pads  
Connect to 3V3  
or 5V

3.3V

from RPI

5V

IN

OUT

PWR

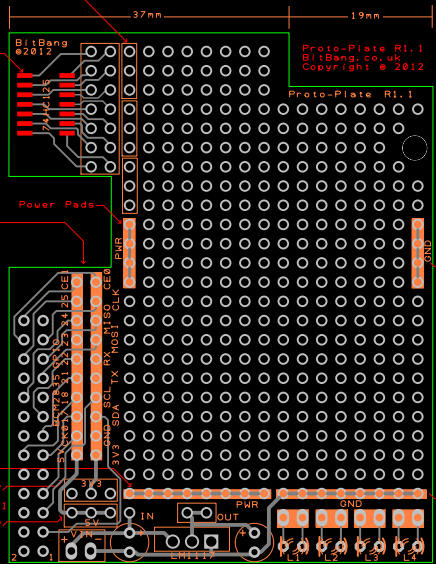
GND

RPI GND

Vreg GND  
IN  
POWER

LM1117  
Voltage Regulator  
Footprint

3mm LED Footprints



7mm

Proto-Plate R1.1

5V GND 18 17 16 15 14 13 12 11 10 9 8 7 6 5 4 3 2 1

CE0 CE1 CLK MOSI RX TX

3V3

3V3

3V3

3V3

3V3

3V3

3V3

3V3

3V3

3V3

3V3

3V3

3V3

3V3

3V3

3V3

3V3

3V3

3V3

3V3

3V3

3V3

3V3

3V3

3V3